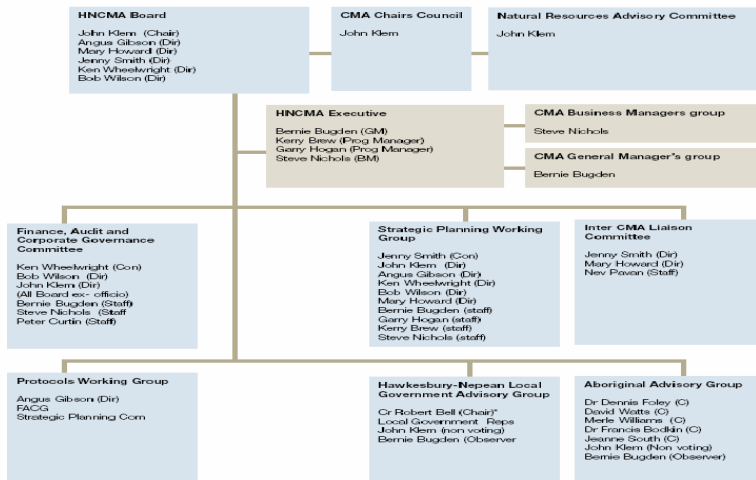




## *Hawkesbury-Nepean Catchment Management Authority STRATEGIC PLANNING PROCESS*

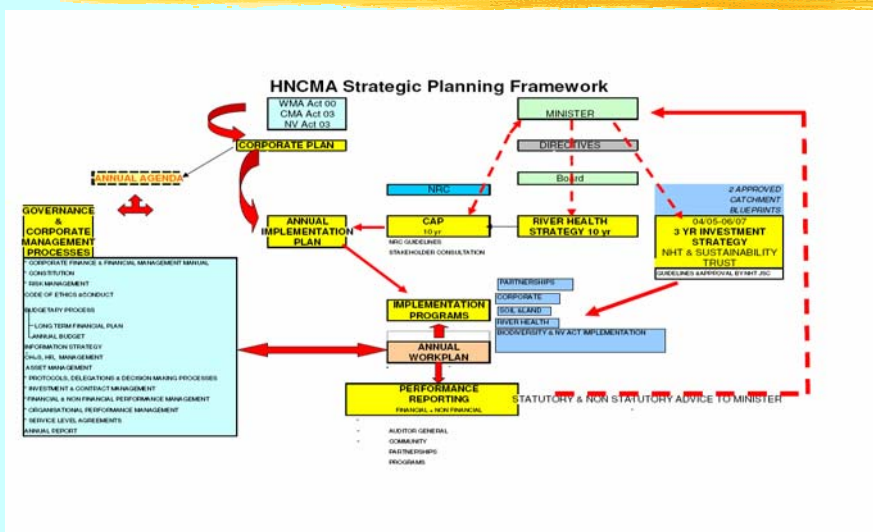


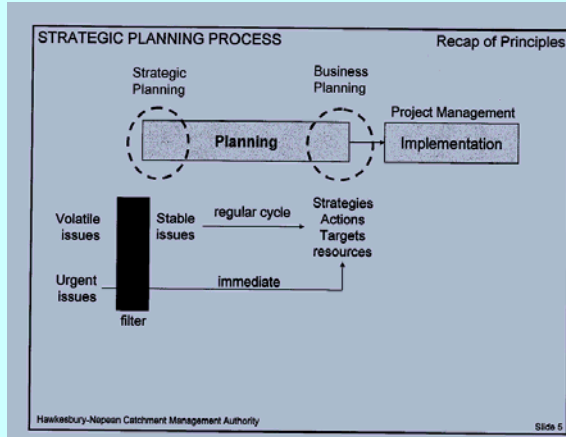
Hawkesbury-Nepean Catchment Management Authority Sub Committee Structure and Membership



**Key Features**

- *Developed by the HNCMA with the support of the NSW Natural Resources Commission*
- *A Planning Process – Not A Plan*
- *Defines relevance and Strategic Priority of emerging issues to CMA*
- *Resolved issues link to HNCMA Business Planning Process*





**The Filter – Excel Spreadsheet**

REVISED FILTER December 07

A	B	C	D	E	F	G	H	I	J	K	L
1	2	3	4	5	6	7	8	9	10	11	12
1	2	3	4	5	6	7	8	9	10	11	12
1	2	3	4	5	6	7	8	9	10	11	12
1	W										
2											
3											
4											
5											
6											
7											
8											
9											
10											
11											
12											
13											
14											
15											
16											
17											
18											
19											
20											
21											
22											
23											
24											
25											
26											
27											
28											
29											
30											
31											
32											
33											
34											
35											
36											
37											
38											
39											
40											
41											
42											
43											
44											
45											
46											
47											
48											
49											
50											
51											
52											
53											
54											
55											
56											
57											
58											
59											
60											
61											
62											
63											
64											
65											
66											
67											
68											
69											
70											
71											
72											
73											
74											
75											
76											
77											
78											
79											
80											
81											
82											
83											
84											
85											
86											
87											
88											
89											
90											
91											
92											
93											
94											
95											
96											
97											
98											
99											
100											

H \> H \ Issues \ #3#4- cma risk \ #5- reg.atory \ #6- pathways \ (ref) env/risk \ (ref) org risk \ (ref) likelihood

## *The Filter Criteria*

- ***Issue – what does it mean?***
  - ***NRM or Corporate Governance/ Admin Issue***
  - ***Primary Issue – Cause or symptom?***
    - *Secondary Issue – To register*
  - ***Risk to environment***
  - ***Risk to organisation***
  - ***Relationship to Catchment Action Plan***
  - ***Pathways For Action***
- All Issues must be satisfied for the issue to progress through the filter***

## **⌘ Resolved Issues**

- Issues that pass filter immediately actioned if resources are available*
  
- Resolved Issues that can not be resourced passed to the business planning process for the coming financial year and are considered in the context of all other priority issues (Still may not be resourced).*



- ❑ Unresolved Issues.
  - Remain in the Filter Register for further/  
future consideration and development.