



West Gippsland Catchment Management Authority



RCIP

2008/2009

What is RCIP?



Alignment of some investment processes for investment in regions

Integrates NHT and some State funding processes

Uses the Regional Catchment Strategy and Action Plans to build business case for investment in region

An adaptive process (*many variables and demands*)



Planning for 2008/2009



Focus on geographic locations - Catchment Ecosystems

Preparation initially on developing collective vision and outcomes for each Catchment Ecosystem – resist the temptation to unpack or operationalise at this stage

Opportunity to explore integration and alignment options

WGCMA Board have approved development process with set of principles



WGCMA Board Principles



Pilot a new RCIP approach

Build the RCIP with a clear vision for NRM protection and enhancement

Focus on long-term outcomes

Strive for integration to achieve multiple outcomes

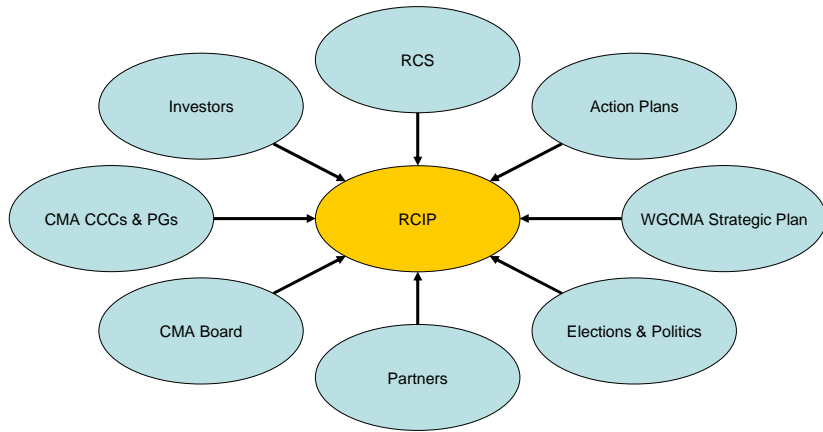
Focus on biophysical assets and locations to provide meaning

Ensure funding is focused with a three-year horizon in mind

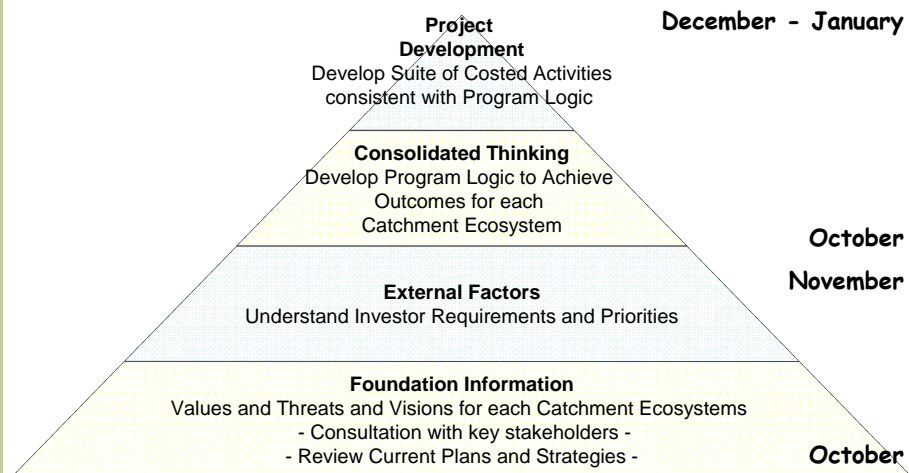
Provide opportunity for meaningful involvement of our CC partners



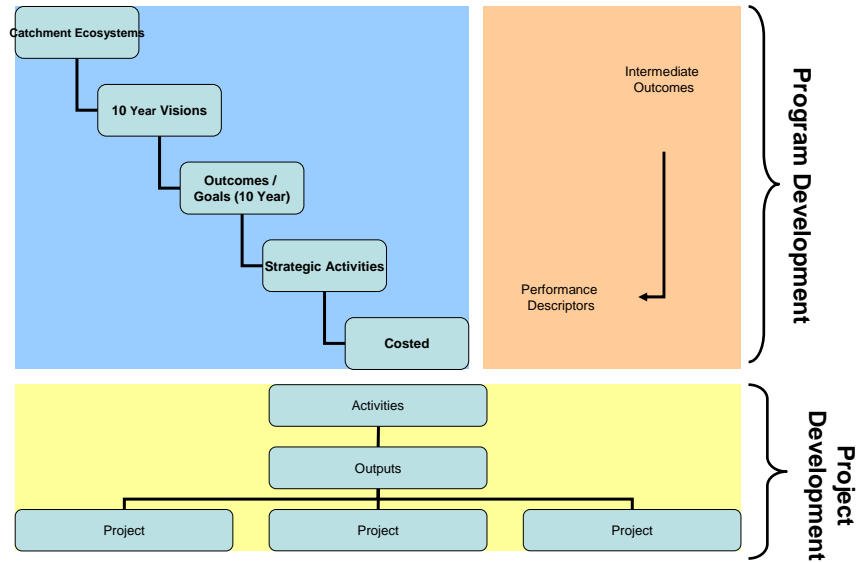
RCIP Influences



Project Development



Development Process



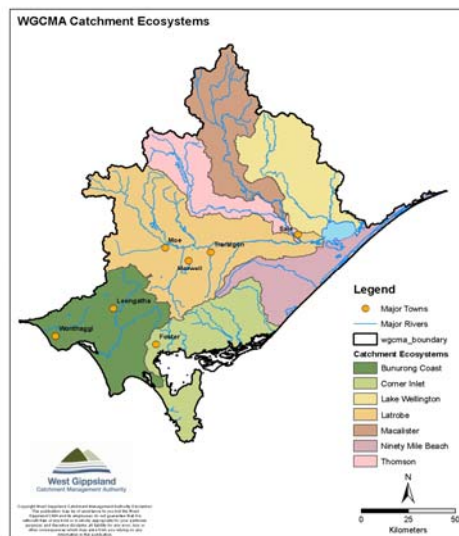
Catchment Ecosystems



Unit the WGCMA has adopted for use for RCIP planning purposes.

Will be used as it is understood the community has a stronger affinity with recognisable assets, or "icons".

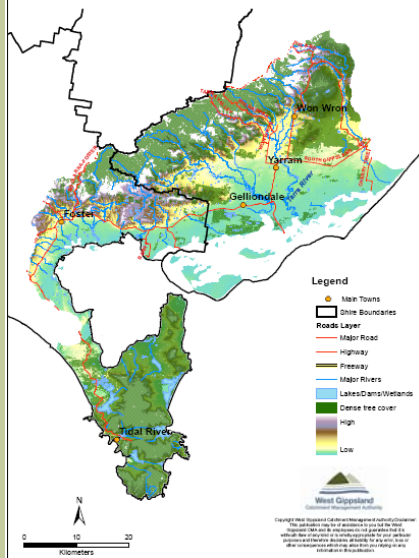
They represent collections of catchment areas that encompass iconic features of the regional landscape.



Catchment Ecosystem



Corner Inlet Catchment Ecosystem



Corner Inlet

